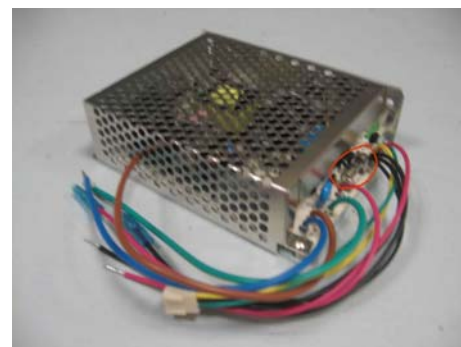


KHD-0102III-EX

- * 45W with battery charging function
- * Auto Switch when power off(UPS function)
- * AC input failure signal (Test Signal)
- * Auto Disconnect when battery voltage low(9.9V±3%)
- * Protections:OVP/OCP/SCP/RBP
- * Charging Current Limited
- * 2 years warranty

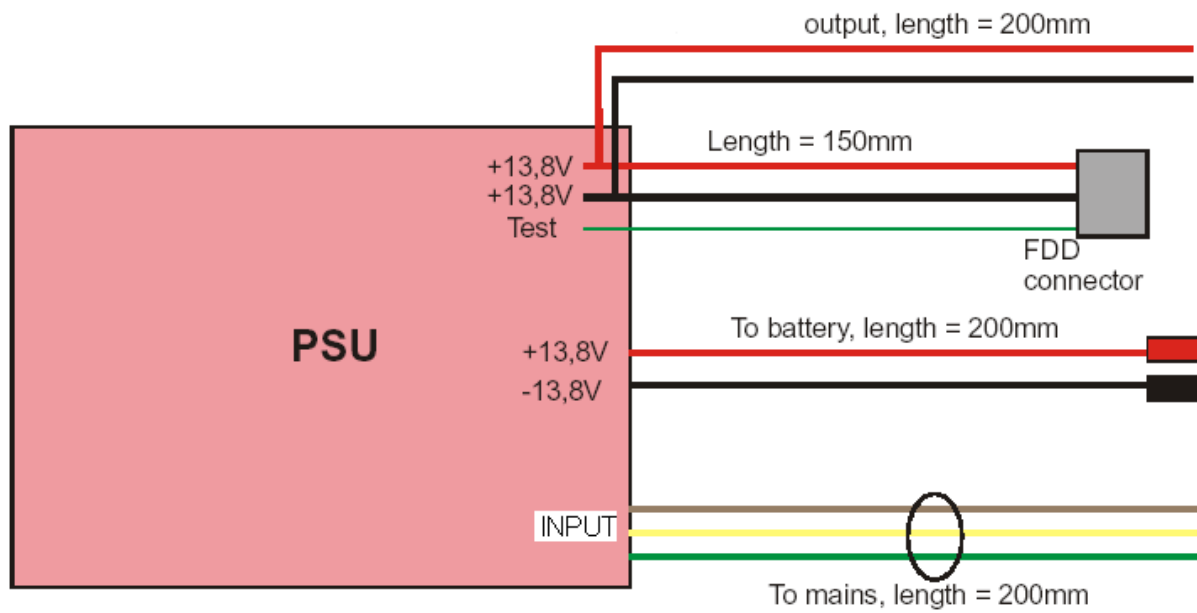


Specification:

All specification are typical at nominal input, full load at 25 degrees C otherwise stated.

INPUT	Input Voltage Range	176Vac~265Vac	
	Input Frequency (Hz)	47Hz~63Hz	
	Rated Input Voltage	220Vac	
	Efficiency (%)	70%	
	Inrush Current	<40A	
	Input Current	<0.65A	
OUTPUT	Output Voltage	V1	V2
		13.8V	13.8V
	Load Current	0.3-3A	0.5A (BAT)
	Line Regulation	<±0.5%	\
	Load Regulation	<±1.0%	\
	Ripple & Noise (mVp-p) 0~20MHz	<140mVP-P	<140mVP-P
	Temperature coefficient	<0.03%/°C	\
	Adjusted Voltage	13.50V~13.80V	\
	AC Input Failure Signal(Test)	AC in normal then Test=0; AC in failure then Test=1	
	Start-up Time	<1.0S	
	Hold-up Time	> 20mS	
Output Power	45Wtyp		
PROTECTION FUNCTION	Over Current Protection	105%~150%, Constant Power	
	Over Voltage Protection	110%~150%, shut down	
	Short Circuit Protection	Auto recovery	
	Reverse Battery Protection	Replace F2 Fuse easily, No need open metal cover	
ISOLATION	Primary to Secondary	1.5KVAC/min, Cutoff current<10mA	
	Primary to P.G	1.5KVAC/min, Cutoff current<10mA	
	Secondary to P.G	0.5KVDC/min, Cutoff current<10mA	
ISOLATION RESISTANCE	Primary to Secondary	>100MΩ	
	Primary to P.G	>100MΩ	
	Secondary to P.G	>100MΩ	
STRUCTURE	Dimensions(L*W*H)	129×98×38 (mm)	
	Cooling method	free air convection	
ENVIRONMENT	Operating temperature & humidity	0°C~50°C, 20%~90% RH	
	Storage temperature & humidity	-25°C~85°C, 10%~95% RH	
NOTE	1. All parameters NOT specially mentioned are measured at 230VAC input, rated load and 25C of ambient temperature. 2. Ripple& noise are measured at 20MHz of bandwidth by using a 12" twisted pair-wire terminated with a 0.1uF &47uF parallel capacitor . 3. Tolerance: includes set up tolerance, line regulation and load regulation .		

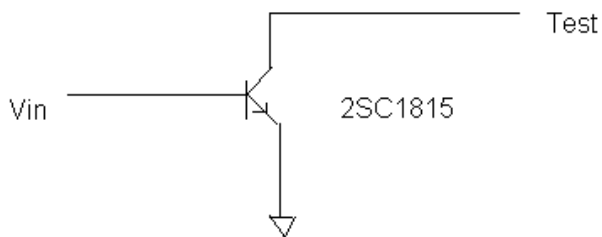
External Connection Indication:



PSU external connections.

*FDD connection option, it can be canceled if customer don't need

Test Signal:



When $V_{ac}=230V$, $V_{in} = 1$, then $V_{test}=0$

When $V_{ac}=0$, $V_{in}=0$, then $V_{test} \neq 0$ (Defined by customer side V_{cc})