

40W Single Output Switching Power Supply



CASE : P22-7

Features:

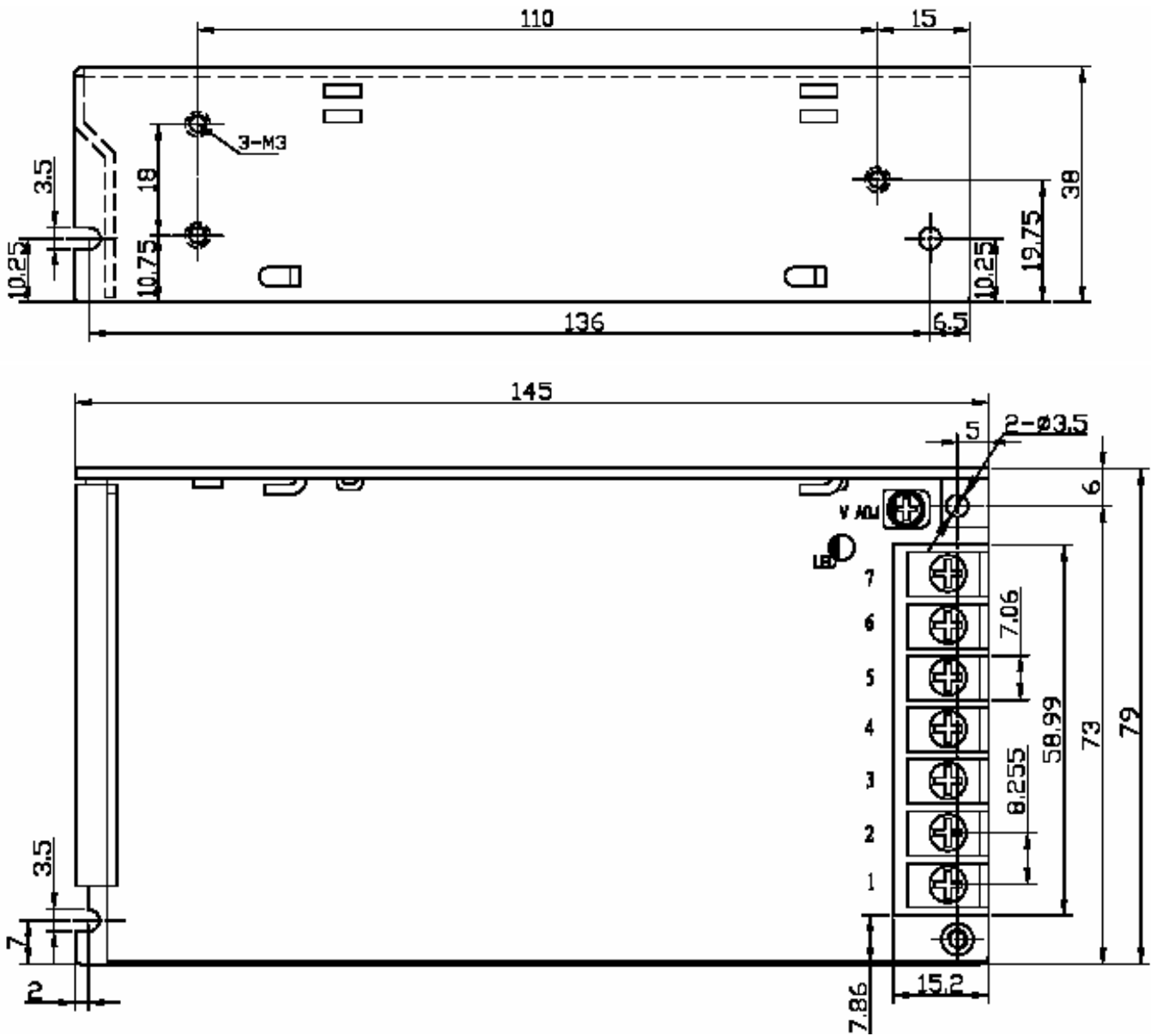
- Miniature
- AC input 176-264V only
- Protections : SCP/ OLP/ OVP
- High reliability, Low cost
- 100% full load burn-in test

Input Volt. & Freq.....	176~264VAC/47~63Hz (210~370VDC)
Inrush Current	40A @ 230Vac (cold start)
DC adjustment range.....	± 10%(rated output voltage)
Overload protection	105%~150% (rated load), Auto-recovery
Over voltage protection	115%~135%(rated output voltage)
Short circuit protection.....	Long-term
Setup time	≤ 1S @ 230VAC
Hold-up time	≥ 20mS @ 230VAC
Withstand voltage	Input-Output: AC1500V, 1min
	Input-Ground: AC1500V, 1min
	Output-Ground: DC500V, 1min
Operating ambient	0°C~50°C; 20%~90%RH (Non condensing)
Safety standards	EN/UL60950
EMC standards.....	EN55022 Class B;
	EN61000-4-2/-3/-4/-5/-6/-11
Dimension(L*W*H)	145 × 78 × 38mm

Model No.	DC Output		Tol.	R&N	Effi.
GZM-H40S5	5V	8A	±3%	≤50mV	72%
GZM-H40S8	8V	5A	±3%	≤80mV	75%
GZM-H40S12	12V	3.3A	±3%	≤120mV	75%
GZM-H40S15	15V	2.6A	±3%	≤150mV	70.5%
GZM-H40S24	24V	1.7A	±3%	≤240mV	80%
GZM-H40S36	36V	1.1A	±3%	≤360mV	82%
GZM-H40S48	48V	0.9A	±3%	≤480mV	82%

■ Mechanical Specification

Unit: mm



Pin No.	Assignment
1	AC-N
2	AC-L
3	F.G
4	NG
5	DC output +V2
6~7	DC output G
8	DC output +V1